

**DISCOUNTS
INSIDE**

**DISCOUNTS
INSIDE**

BEST DAYS OUT CORNWALL

Make memories at over
35 top tourist attractions

2023 Edition

**Cornwall
Association of
Tourist
Attractions**

Make memories at over 35 top tourist attractions

2023 Edition



**Cornwall
Association of
Tourist
Attractions**

Cornwall's top attractions

Attractions & Theme Parks

- | | |
|--------------------------------------|-----|
| 1 Bodmin Railway | p7 |
| 2 Bodmin Jail | p7 |
| 3 Camel Creek Theme Park | p8 |
| 4 Cornwall Football Golf Park | p9 |
| 5 Dairyland Farm Park | p10 |
| 6 Eden Project | p11 |
| 7 Flambards | p12 |
| 8 Geevor Tin Mine | p13 |
| 9 Hangloose Adventure | p14 |
| 10 Healeys Cornish Cyder Farm | p15 |
| 11 Jubilee Pool | p16 |
| 12 Land's End | p17 |
| 13 Lappa Valley | p18 |
| 14 Shipwreck Treasure Museum | p19 |
| 15 St Austell Brewery Visitor Centre | p20 |
| 16 The Lost Gardens of Heligan | p21 |
| | p22 |

Wildlife

- | | |
|----------------------------------|-----|
| 24 Cornish Seal Sanctuary | p29 |
| 25 The National Lobster Hatchery | p30 |
| 26 Newquay Zoo | p31 |
| 27 Paradise Park & JungleBarn | p32 |
| 28 Screech Owl Sanctuary | p33 |

Gardens & Country Houses

- | | |
|------------------------|-----|
| 29 Cotehele | p34 |
| 30 Glendurgan Garden | p35 |
| 31 Lanhydrock | p36 |
| 32 Pinetum Gardens | p37 |
| 33 St Michael's Mount | p38 |
| 34 Trebah Garden | p39 |
| 35 Trellisick | p40 |
| 36 Trengwainton Garden | p41 |
| 37 Trerice | p42 |

Arts and Culture

- | | |
|--------------------------------------|-----|
| 17 The Minack Theatre | p43 |
| 18 National Maritime Museum Cornwall | p43 |
| 19 Pendennis Castle | p44 |
| 20 PK Porthcurno | p45 |
| 21 Tate St Ives | p46 |
| 22 Tintagel Castle | p47 |
| 23 Wheal Martyn Clay Works | p48 |
| | p49 |





For direct links to book tickets
and special offers, visit
bestdaysoutcornwall.co.uk



Our attractions are the best in Cornwall

From country houses and castles to mines and museums, gardens and galleries to theme parks, wildlife sanctuaries and zoos – Cornwall has a wealth of attractions to choose from. Whether you're visiting for a short break or happy to call this place home, make each day a discovery.

Every destination featured in these pages is a member of the Cornwall Association of Tourist Attractions (CATA). As a collective of almost 40 top attractions, we've been creating Cornwall's best visitor experiences since 1974, working together to meet

and raise industry standards. We're passionate about Cornwall, and love inspiring visitors with ideas for new and varied experiences. Our aim is clear: to create quality days out that you'll remember for years to come.

Be curious and explore the best our beautiful county has to offer. Uncover the stories behind some of our most impressive and intriguing gardens and houses, be excited at our attractions and theme parks, and learn more about Cornish heritage, culture and art. Find out what some of our members



are doing to ensure conservation of important species, and what steps others are taking to raise awareness of plastic pollution and sustainability issues. There's so much to discover!

We work with Cornwall's best tourist attractions to offer great days out, whatever the weather. Come rain or shine, you can be sure that a visit to a CATA-affiliated attraction will give you one of the best days out in Cornwall!

Best Days Out Cornwall is brought to you by the Cornwall Association of Tourist Attractions (CATA): a collective of almost 40 top tourist attractions in the county. As part of the CATA network, every attraction in this guide is working to maintain high industry standards and guarantee unforgettable experiences for visitors.

Find these symbols in the guide to know whether attractions:



welcome dogs



include indoor experiences



have food and drink available



are open during winter



are wheelchair accessible

Discover more online

Explore our website for more information - including direct links to book your tickets and special offers.

Sign up for our regular emails, jam-packed with top tips for making memories with your family.

 bestdaysoutcornwall.co.uk



Win free entry to over 30 attractions



Tag us on social media using the hashtag **#bestdaysoutcornwall** for a chance to win a 2024 pass giving free entry to over 30 attractions for you and one other person.

Full terms and conditions can be found at:
bestdaysoutcornwall.co.uk/compterms



BestDaysOutCornwall



GuideToCornwall



bestdaysoutcornwall



Days of discovery, years of memories

Attractions and Theme Parks p7-22

Experience some of the most exciting, intriguing and family friendly days out in Cornwall, with something to entertain everyone. From fairgrounds and thrill rides to steam railways and cream teas, you'll find there's something for every day of your stay.

Wildlife p29-33

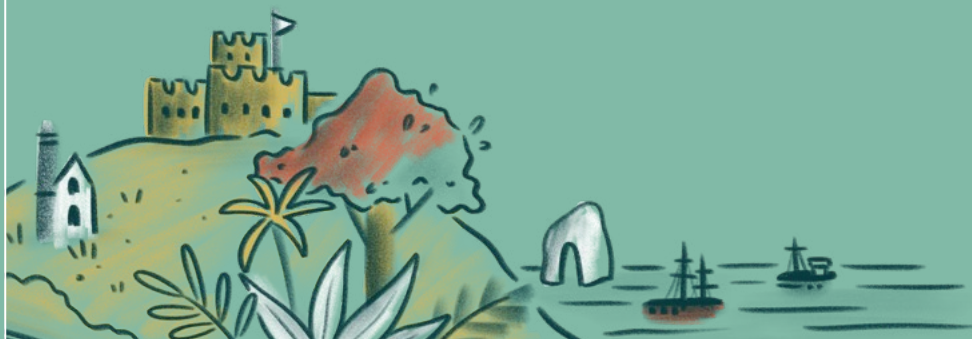
Conservation lies at the heart of many of Cornwall's visitor attractions. Around the county, you'll find a number of places to visit who are undertaking important work in animal conservation, and your visit can make a real difference in supporting what they do.

Gardens and Country Houses p34-42

Enjoy the abundant beauty of Cornwall's estates, gardens and country houses, with roots that stretch back through centuries. Stroll through exotic valley gardens, beautiful in any season, or explore impressive country estates and manor houses bringing the past to life.

Arts and Culture p43-49

Cornwall is a rich tapestry of cultural experiences. For generations, this place has been an escape for creative minds, leaving a vibrant legacy of galleries, museums and theatres. Here, you'll find the space to immerse yourself in tales from our past or to experience groundbreaking new artists.





Bodmin Railway

Discover the nostalgia of steam travel with a journey back in time on Cornwall's leading full-size railway operated by steam locomotives. Relax in style and enjoy a leisurely 13-mile round trip taking in the atmosphere of a bygone age – explore a Cornish branch line of the 1950s.

Indulge in a Cornish cream tea, or pop into one of our Cornish Railway Coffee Company cafés to relax and refuel.

Book onto a variety of new events in 2023 including driver day experiences,

Santa Specials, notorious Murder Mystery evenings with changing seasonal storylines or get in touch for unique private hires.

Dogs are welcome aboard the trains for paws on floor travel. Book tickets online to avoid disappointment.



📍 Bodmin General Station, Bodmin, PL31 1AQ
☎ 01208 73555 🌐 bodminrailway.co.uk



For opening times, tickets and to find out more, scan or visit: bdoc.uk/bwr



Bodmin Jail

2023 is a milestone year at Bodmin Jail, commemorating 100 years since the last prisoner left the building. As part of standard entry, the prison will mark this centenary with special events and tours running throughout the year, from immersive theatre to stunning installations.

Renowned for its award-winning immersive history, Bodmin Jail is a world-class experience for all the family, from history lovers, the criminally curious and to those who like a touch of darkness. Cornwall's fascinating

heritage is showcased within the Jail's Grade II listed walls, where visitors will journey into the past and experience the sights, sounds and smells of over two hundred and fifty years of history. Bodmin Jail is a historical feast for the senses and can be experienced in many ways - whether you are looking for a fun-filled family adventure, an outstanding guided Heritage Tour or a journey into the paranormal. Have you had your experience yet?

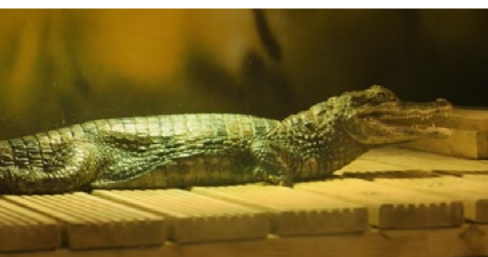
Visits to Bodmin Jail should be booked online in advance.



📍 Berrycombe Road, Bodmin, PL31 2NR
☎ 01208 76292 🌐 bodminjail.org



For opening times, tickets and to find out more, scan or visit: bdoc.uk/bodj



Camel Creek Theme Park

With adventure around every corner, Camel Creek Family Theme Park offers excitement for young families— from thrill rides and adrenalin rushes to animal handling sessions and junior zookeeper experiences. Famous for their events schedule, the Wadebridge theme park often plays host to much-loved children's characters as well as their popular Halloween and Christmas events. With fun rides and activities, both indoors and out, this world of adventure will create magical memories for the whole family. Meet a variety of animals – from riveting reptiles to

creepy crawlies, majestic horses to mischievous meerkats – every path leads to new experiences.

The indoor soft play is open all year round. Ride opening times vary during low peak season so do check the ride status page on the attraction website before you arrive.



📍 Tredinnick, Wadebridge, PL27 7RA
☎ 01841 540 276 🌐 camelcreek.co.uk



For opening times, tickets and to find out more, scan or visit: bdoc.uk/ccftp



Cornwall FootballGolf Park

Imagine crazy golf – but supersized and played with a football. Enjoy this unique outdoor experience with spectacular views over the coast, found just five minutes from the Eden Project.

With hazards and obstacles on every hole, the challenges of completing the course provide hours of fun for the young and young at heart. Perfect for family-friendly fun, or a day out with friends, there's two 18-hole courses

to complete – one on level ground called Parkland and one on the hills called Hillside. Set in 18 acres with sea views on parts of the course, Cornwall FootballGolf has large outdoor and covered seating areas with a licensed bar serving hot food, drinks and ice creams.

Open daily from Easter to November, with last start two hours before dusk. Please note, only card or contactless payments accepted.



📍 Trenowah Road, St Austell, PL25 3GD
☎ 01726 68952 🌐 cornwallfootballgolf.co.uk



For opening times, tickets and to find out more, scan or visit: bdoc.uk/cfg



Dairyland Farm Park

Discover all the fun of the farm at Dairyland Farm Park. Offering farmyard frolics since 1975, families will enjoy outdoor fun such as meeting the animals at this tourist attraction - including cute rabbits and guinea pigs or spiders and snakes for the brave!

Children can roam free in large outdoor play areas with zipwires, trampolines, swings and slides, or enjoy drop slides in the soft play area. Daily events include bottle-feeding, pat-a-pet, pony rides, tractor rides, meeting our cows in the parlour or you

can also have a go at milking Clarabelle the cyber cow!

The adventure playground offers lots of fun. Race around the Pedal Kart track or experience a tractor ride through the beauty of the Nature Trail. There's also the Bull Pen (open all year) - a 12,000sq ft undercover play area.

You can also journey back in time in the Cornish Heritage Museum – a fascinating look at how we used to live and work.



📍 Tresillian Barton, Newquay, TR8 5AA
☎ 01872 510246 🌐 dairylandfarmpark.com



For opening times, tickets and to find out more, scan or visit: bdoc.uk/dfp



Eden Project

A living theatre of plants and people, the Eden Project is a global garden, educational charity and social enterprise all in one.

Begin your journey in the Outdoor Gardens, where wild landscapes are juxtaposed with Europe's largest collection of useful plants – from food crops to medicines – alongside striking colour-themed borders. Experience the sights and scents of the Mediterranean Biome, where you'll find beautiful flower displays and ripening seasonal crops.

Then immerse yourself in the steamy heat of the Rainforest Biome, the gleaming green jewel in our crown. Here you can marvel at the breath taking view of the treetops from the Canopy Walkway.

Eden is a feast for the senses and can be experienced in so many different ways, whether you're looking for calming immersion in nature or a fun-packed day of adventure.

Visits to Eden must be booked online in advance.



📍 Bodelva, PL24 2SG

☎ 01726 811972 🌐 edenproject.com



For opening times, tickets and to find out more, scan or visit: bdoc.uk/ep



Flambards

Have the best day of the week at Flambards, come rain or shine. With outdoor excitement and indoor experiences, this day out at the much-loved theme park in Helston offers fun for all.

Take a spin on the Hornet Rollercoaster, dare to brave Sky-Force, splash down the log flume, jump aboard the Western Mine Train and discover lots more amazing rides.

Discover big adventures for little ones as – new for 2023 – a giant soft

play area opens at the park. Enjoy the smaller rides at Ferdi's Funland and track down some dinosaurs.

Explore the Victorian Village with more than 50 life-sized scenes. Feel the floor shake as another bomb hits the street in Britain in the Blitz exhibition.

Visit the website for the best price on tickets and special events.



📍 Clodgey Lane, Helston, TR13 0QA
☎ 01326 573404 🌐 flambards.co.uk



For opening times, tickets and to find out more, scan or visit: bdoc.uk/ftp



Geevor Tin Mine

Geevor Tin Mine is an award-winning welcoming family-friendly attraction set on the cliffs of the rugged and dramatic Tin Coast in West Cornwall.

The stunning Cornwall coastline around Pendeen was once the heart of Cornish mining, creating jobs and community around the tin mines for local people. Today, Geevor Tin Mine gives visitors an opportunity to visit a real mine and learn what life was like as a Cornish miner. Put on your hard hat and explore the mine buildings with their magnificent

mining machinery. Find out how the rock was mined from 600m below the ground and processed in the Mill. Get hands-on panning for 'gold' and gems and keep whatever treasures you find.

Go underground into 18th century Wheal Mexico Mine and see what it was like to work there. Discover our full events programme – included in your ticket price – on our website.



📍 Pendeen, Penzance, TR19 7EW

☎ 01736 788662 🌐 geevor.com



For opening times, tickets and to find out more, scan or visit: bdoc.uk/gtm



Hangloose Adventure

Whether you're flying at speeds of up to 60mph down England's fastest zipline, clambering above the tree tops on high ropes or reaching new heights on our climbing wall - if you're in pursuit of an adrenaline buzz, you can test your limits on one of the exciting activities Hangloose Adventure has to offer.

Situated in the heart of Cornwall within the idyllic setting of the Eden Project, this outdoor adventure centre is perfect for thrill seekers visiting or living in Cornwall and who want to enjoy an exhilarating, unforgettable day out for friends and

families. Rated in the top 10% of tourist attractions globally by TripAdvisor, this is a chance to visit a world-class adventure centre right here in Cornwall.

With a variety of adrenaline-inducing activities to try, this adventure experience offers a number of multiactivity packages - experience one, two or all of them throughout your visit!

For group, schools, corporate discounts and charity fundraising opportunities, visit the Hangloose website.



📍 Eden Project, Bodelva, PL24 2SG
☎ 01726 812724 🌐 hanglooseadventure.com



For opening times, tickets and to find out more, scan or visit: bdoc.uk/ha



Healeys Cornish Cyder Farm

Explore the home of Rattler Cyder and uncover a world of apples, imagination, and adventure.

Meet friendly farm animals, experience traditional jam making, venture above the cyder production factory, learn about cyder-making through the ages in our museum, explore the cobbled cellars, peek at Cornwall's oldest distillery, and relish the opportunity to enjoy over 60 tastings in the Tasting Room!

Make your visit extra special and book a guided tour or experience and create memories you'll cherish.

Children aged 0-5 go free and all visitors can claim a 20% 'thank you' discount when you pre-book your visit online. All tickets include unlimited entry for 12 months.



📍 Penhallow, Truro, TR4 9LW

☎ 01872 573356 🌐 healeyscyder.co.uk



For opening times, tickets and to find out more, scan or visit: bdoc.uk/hccf



Jubilee Pool

Take an open air dip in the UK's largest and most celebrated saltwater lido. Swim outdoors at this illustrious and historic outdoor swimming pool overlooking Penzance seafront.

Opened in the 1930s, the triangular art deco seawater pool has provided a bracing swim to holidaymakers and Cornish residents alike for many years and 2020 saw Jubilee Pool launch a geothermal pool - a UK first, offering you the chance to bathe in natural salt water heated to 35 degrees by their own hot water well.

This unique experience will create treasured memories for years to come – from splashing around as a family to luxurious holistic treatments for adults, soaking up the Cornish summer sun or enjoying a bracing sea swim in the off-season.

Treat yourself to a post-swim meal at Jubilee Pool cafe, serving locally-sourced food and drink with unrivalled views across Mounts Bay.



📍 Battery Road, Penzance, TR18 4FF
☎ 01736 369224 🌐 jubileepool.co.uk



For opening times, tickets and to find out more, scan or visit: bdoc.uk/jp



Land's End

Escape to the westernmost point of Cornwall, famed for its unique location and breathtaking coastal landscapes. Immerse yourself in over 100 acres of outstanding natural beauty at the far end of our county, and have your picture taken at the famous signpost.

This unique landmark offers fun and entertainment, creating special moments to last a lifetime. Enjoy the family entertainment before you embark on stunning coastal walks.

During the summer, Land's End keeps their doors open into the evening, giving you outstanding views of the sun setting over the Atlantic Ocean. As darkness falls, enjoy the iconic Magic in the Skies fireworks display and dance to live music every Tuesday and Thursday from Tuesday 25 July – Thursday 31 August.

New for 2023, discover The Lost Treasure of Lyonesse: A Golf Adventure - enjoy fun for all of the family with our indoor mini golf course.



📍 Land's End, Sennen, TR19 7AA

☎ 01736 871501 🌐 landsend-landmark.co.uk



For opening times, tickets and to find out more, scan or visit: bdoc.uk/le



Lappa Valley

Discover the only attraction in Cornwall that transports families on an exciting nostalgic train ride into a secret world of traditional fun and family adventures. Children will delight in the thrill of trains and boats, play in outdoor spaces and explore nature.

Be sure to visit The Engine Shed, home to an exciting multi-level soft play area where children can let off steam whilst you relax and refuel in the comfort of the café. Take swan pedalos out on the boating lake, try your hand at a round of crazy golf, have a bounce on our

trampolines and enjoy the excitement of two other miniature train rides.

Set in 35 acres of rolling green countryside just outside Newquay, Lappa Valley is a world of wonder beloved of families through the generations.

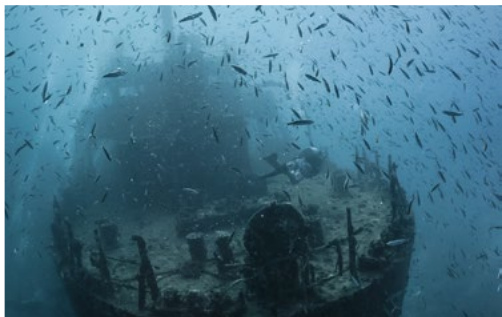
Lappa Valley is open year round and holds special events throughout the year.



📍 St Newlyn East, Nr Newquay, TR8 5LX
☎ 01872 510317 🌐 lappavalley.co.uk



For opening times, tickets and to find out more, scan or visit: bdoc.uk/lv



Shipwreck Treasure Museum

"I go to bed at night dreaming of the things I missed" — *Peter McBride, Shipwreck Diving Pioneer*

Dive in and discover the spirit of adventure that inspired the legacy of exploration in the harshest environments on Earth. Set in the heart of the UNESCO World Heritage Site of Charlestown, explore over 8,000 treasures from Europe's largest private collection of shipwreck artefacts.

Shackleton's Legacy and Ice Tunnel Experience

Follow in the footsteps of the legendary crew of Sir Ernest Shackleton's famous lost ship *Endurance*, as seen through the lens of photographer Frank Hurley and presented by the Royal Geographical Society. Journey through the immersive ice-covered tunnels and experience one of the most inspirational tales of adventure.



📍 Quay Road, Charlestown, PL25 3NX

☎ 01726 69897 🌐 shipwreckcharlestown.co.uk



For opening times,
tickets and to find out
more, scan or visit:
bdoc.uk/stm



St Austell Brewery Visitor Centre

A trip to St Austell Brewery's Visitor Centre is a must for beer lovers. Most famous for its flagship beer, Tribute pale ale, the brewery's range of award-winning beers (including Proper Job IPA and Korev lager) are available in pubs and supermarkets nationwide and exported across the world.

Uncover the rich history of the independent family brewery, from its humble 19th-century beginnings to the

pioneering and diverse business it is today. Interactive brewery tours put you at the heart of the creative process behind St Austell's award-winning ales, while both the Hicks Bar and shop offer the chance to indulge in flagship and small batch brews, with some tasty food to boot. A fascinating day out throughout the year.



📍 63 Trevarthian Road, St Austell, PL25 4BY
☎ 01726 66022 🌐 staustellbrewery.co.uk



For opening times,
tickets and to find out
more, scan or visit:
bdoc.uk/sab



The Lost Gardens of Heligan

Once lost to the brambles of time, The Lost Gardens of Heligan have been rediscovered and restored to become one of the most loved gardens in the UK: the "garden restoration of the century".

Over 200 acres of winding pathways await intrepid explorers, garden fanatics and wildlife lovers. Embark on a subtropical adventure through the UK's only outdoor Jungle where you'll marvel at towering tree ferns and cross one

of the longest Burmese rope bridges in the country. You'll also meet native rare breed animals at Heligan Home Farm.

Heligan is a garden for the soul, whether you're looking for a day of outdoor adventures, or to connect with nature, this is a magical estate unlike any other.



📍 Pentewan, St Austell, PL26 6EN

☎ 01726 845100 🌐 heligan.com



For opening times, tickets and to find out more, scan or visit: bdoc.uk/lgoh

The South West Coast Path

“Walking at its most diverse, most spectacular
and most delicious.”

Lonely Planet Great Adventures Guide



Pedn Vounder Beach. Photographer James Loveridge

At 630 miles, the South West Coast Path is Britain's longest and best-loved National Trail, capturing the hearts and minds of all who journey along it. Step on to the Path and discover a landscape steeped in history and heritage; connect with nature; enjoy exploring numerous beaches and coves.

The South West Coast Path Association is the charity that protects, cares for and champions the Path. 2023 is the 50th anniversary of the charity – join the celebrations! Go to southwestcoastpath.org.uk to find out more or scan the QR code.



adventures await...

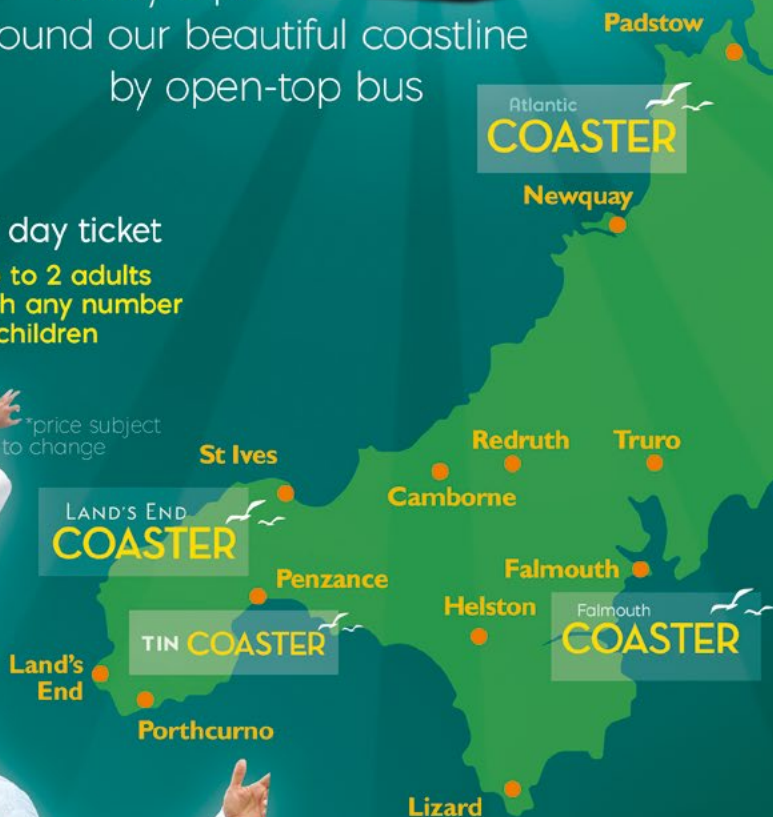


Fab, fun,
family trips
around our beautiful coastline
by open-top bus

£10*

all day ticket
up to 2 adults
with any number
of children

*price subject
to change



adventuresbybus.co.uk



Special Offers



10 % OFF
JAIL ENTRY

Best Days Out
Cornwall 2023

See the reverse for all
the voucher details



£3 OFF
PER PERSON

Best Days Out
Cornwall 2023

See the reverse for all
the voucher details



UP TO £1 OFF
PER PERSON

Best Days Out
Cornwall 2023

See the reverse for all
the voucher details



10 % OFF
TICKETS

Best Days Out
Cornwall 2023

See the reverse for all
the voucher details



£1 OFF
PER PERSON

Best Days Out
Cornwall 2023

See the reverse for all
the voucher details



10 % OFF
PER PERSON

Best Days Out
Cornwall 2023

See the reverse for all
the voucher details



10 % OFF
EXPERIENCE

Best Days Out
Cornwall 2023

See the reverse for all
the voucher details



UP TO £6 OFF
ADMISSION

Best Days Out
Cornwall 2023

See the reverse for all
the voucher details

We are pleased to provide you with vouchers for many of our top tourist attractions, with special offers and discounts to use when booking your visit. Make sure you read the conditions for each offer, and take the voucher with you on your visit.

Save 10% off Jail Entry with online code 'BODPUBLICATION10'.	Conditions: Claim 10% off Jail Entry using our promo code BODPUBLICATION10 when you book online at www.bodminjail.org . For full terms and conditions please see our website. www.bodminjail.org	BDOC-2023
Present this voucher to receive £3 per person off the standard admission prices.	Conditions: Cannot be used in conjunction with any other offer, valid until 31 October 2023.	BDOC-2023
Present this voucher after 3pm to receive £1 OFF PER ADULT AND 50P OFF PER CHILD.	Conditions: Present this voucher after 3pm for £1 off per adult and 50p per child from our standard admission prices. Maximum 5 persons. Valid from Easter 2023 to 1 November 2024.	BDOC-2023
Present this voucher to receive 10% per person off the standard admission prices.	Conditions: Up to maximum of 5 people per voucher. Not to be used in conjunction with any other offer or discount. Photocopies not accepted. Vouchers must be presented at time of entry to qualify for discount. Valid until 31 March 2024.	BDOC-2023
Present this voucher to receive £1 per person off the standard admission prices.	Conditions: Maximum 5 persons per voucher. Not to be used in conjunction with any other offer or discount. Valid until 31st March 2024.	BDOC-2023
10% Off entry, tractor rides, tours & experiences. Use code: bdoc10	Conditions: Must be booked online at healeyscyder.co.uk using the discount code during booking. Cannot be used in conjunction with any other offer(s). Subject to change and based on availability. Valid until 31/01/2024.	BDOC-2023
Present this voucher to receive 10% per person off the standard Experience Ticket prices.	Conditions: Not to be used in conjunction with any other offer or discount. Cannot be used on The Lost Treasure of Lyonesse: A Golf Adventure. Valid until 31 October 2023.	BDOC-2023
Present this voucher to receive £1 per person off standard admission price.	Conditions: Maximum 6 people per voucher. Voucher cannot be used in conjunction with any other offer or discount including family saver ticket. Not valid at certain special events. Valid from 25 March 2023 - 29 October 2023. Not valid for any special event days.	BDOC-2023

Special Offers



20% OFF
TICKETS

**Best Days Out
Cornwall 2023**

See the reverse for all
the voucher details



£1 OFF
PER PERSON

**Best Days Out
Cornwall 2023**

See the reverse for all
the voucher details



£1 OFF
PER PERSON

**Best Days Out
Cornwall 2023**

See the reverse for all
the voucher details



10% OFF
PER PERSON

**Best Days Out
Cornwall 2023**

See the reverse for all
the voucher details



£2 OFF
PER TICKET

**Best Days Out
Cornwall 2023**

See the reverse for all
the voucher details



10% OFF
PER PERSON

**Best Days Out
Cornwall 2023**

See the reverse for all
the voucher details



FREE ENTRY
FOR CHILDREN UNDER 16

**Best Days Out
Cornwall 2023**

See the reverse for all
the voucher details



£1 OFF
PER PERSON

**Best Days Out
Cornwall 2023**

See the reverse for all
the voucher details

We are pleased to provide you with vouchers for many of our top tourist attractions, with special offers and discounts to use when booking your visit. Make sure you read the conditions for each offer, and take the voucher with you on your visit.

Present this voucher to receive 20% discount per person off the standard admission prices.

Conditions: Must present voucher on entry for 20% discount. Must be used by 31 December 2023. Not to be used alongside any other promotions. Only to be used on one transaction for up to one family ticket.

BD0C-2023

Booking advisable - Use code BEST23 online to claim £1 per person discount.

Conditions: Please see our website for the latest booking information. Discount off standard entry prices. Cannot be used in conjunction with any other offer or winter JungleBarn Play Only sessions. Valid to 31st March 2024.

BD0C-2023

£1 OFF PER ADULT, under 11s free — save up to £6 on adult entry with this voucher.

Conditions: £1 off per adult. Max 6 persons per voucher. Free entry for children under 11 years with a full paying adult. Not to be used in conjunction with any other offer or discount.

BD0C-2023

Present this voucher to receive 10% per person off the standard admission joint ticket prices.

Conditions: 10% off per person. Only applicable to the joint ticket option. Max 6 persons per voucher. Not to be used in conjunction with any other offer. Not valid for online purchases. Redeemable at the time of entry only. Valid until 31 October 2023.

BD0C-2023

Present this voucher to receive £2 OFF standard admission per ticket.

Conditions: Voucher only accepted at time of entry. Not to be used with any other offer or discount. Discount applies to standard admission.

BD0C-2023

Present this voucher to receive a 10% discount per person.

Conditions: 10% off all year round in the Visitor Centre Shop, Hicks Bar and on Brewery tours. Max group size of 4 per voucher. Not to be used in conjunction with any other offers. Not valid for online purchases. Expires 31 December 2023.

BD0C-2023

FREE ENTRY for children under 16.

Conditions: Families can gain free access for their children when accompanied by an adult paying the full admission fee. Max 4 children per adult. This voucher must be presented on arrival when paying at the welcome desk. Photocopies cannot be accepted. No discounts can be made in retrospect. This voucher is valid until 31 December 2023

BD0C-2023

Present this voucher to receive £1 per person off the standard admission prices.

Conditions: Maximum 6 persons per voucher at Wheal Martyn Clay Works. Not to be used in conjunction with any other offer or the family saver ticket. Photocopies not accepted. Valid for the 2023 season.

BD0C-2023



Cornish Seal Sanctuary

Dive into an ocean experience at the Cornish Seal Sanctuary - Cornwall's fun family day out with seal rescue at the heart of everything they do.

With a prime focus on rescuing, rehabilitating and releasing grey seal pups from around the Cornish coastline, this charity sees an estimated 70 pups a year coming through the doors each winter season – and is your chance to see them before they return to the wild.

Through the summer, discover the stories behind the long-term residents who now call the Sanctuary their forever home, take the dog on one of the woodland walks or re-discover nature at Secret Creek. A wildlife haven on the edge of the Helford River, near Helston, experience wildlife up close at Cornwall's only seal sanctuary.



📍 Gweek, TR12 6UG

📞 01326 221 361 🌐 sealsanctuary.sealifetrust.org



For opening times, tickets and to find out more, scan or visit: bdoc.uk/css



Image: Alex Hyde

The National Lobster Hatchery

Experience pioneering marine conservation in action on the beautiful estuary in Padstow and be inspired to make a difference.

An award-winning visitor centre, get up close with rarely seen lobster babies, pregnant lobster mamas, giant lobsters and other weird and wonderful coastal creatures. Adopt a baby lobster and track when and where it is released into the ocean

through their innovative lobster 'Raise & Release' programme.

The National Lobster Hatchery team are global experts and renowned scientists. Catch a glimpse of what's happening at the forefront of marine conservation with a visit to this unique Padstow attraction.

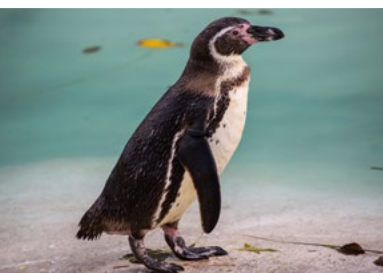
Open daily from 10am and perfect for all ages and weathers.



📍 South Quay, Padstow, PL28 8BL
 🌐 nationallobsterhatchery.co.uk



For opening times, tickets and to find out more, scan or visit: bdoc.uk/nlh



Newquay Zoo

Meet hundreds of the world's rarest and most endangered animals at Newquay Zoo. This education and conservation charity, owned by Wild Planet Trust, gives you the chance to see many animals, from familiar faces such as sloths, penguins, zebras and meerkats, to critically endangered warty pigs and Javan green magpies.

Just a short walk from the centre of Newquay, and set in over 13 beautifully landscaped acres, a visit to the zoo is a great way to find out about conservation and support

their valuable work in helping halt species decline.

Children can run wild in two outdoor play areas, before enjoying a bite to eat from Café Lemur or one of several food kiosks and choosing a unique gift from the shop.

Newquay Zoo is open daily from 10am – make sure you book your tickets online for great savings.



📍 Trenance Gardens, Newquay, TR7 2LZ
📞 01637 873342 🌐 newquayzoo.org.uk



For opening times, tickets and to find out more, scan or visit: bdoc.uk/nz



Paradise Park & JungleBarn

The Reynolds family's award-winning sanctuary – celebrating its 50th year in 2023 – is set in exotic gardens with over 1,200 stunning birds to meet – spectacular parrots, penguins, flamingos, Cornish choughs, golden and bald eagles, toucans plus rare red pandas, red squirrels, and cute harvest mice. See the website for details of summer free-flying bird shows and daily events.

Meet mini donkeys, pygmy goats, sheep, rabbits and guinea pigs in the Fun Farm and enjoy the huge indoor

JungleBarn – fun for the whole family whatever the weather with giant slides, challenging soft play, toddlers' zone and cafe.

The Park is a leader in conservation, home to the World Parrot Trust which works to save rare parrots across 43 countries and Operation Chough, expert in breeding choughs for release projects in Jersey and southern England. You'll have a wonderful and worthwhile day out at Paradise Park.



📍 Trellisick Road, Hayle, TR27 4HY

☎ 01736 751020 (Infoline) 🌐 paradisepark.org.uk



For opening times, tickets and to find out more, scan or visit: bdoc.uk/ppjb



Screech Owl Sanctuary

Based on the edge of Goss Moor nature reserve, family-owned Screech Owl Sanctuary is a haven for sick and injured owls. The team at this vital rescue centre work tirelessly in conservation, education and rehabilitation – providing the best possible support for all those in their care.

Discover a fascinating insight into the lives of these majestic birds of prey, with close encounters, flying displays and talks from the experts. Home to over 81 owls and 32 different species from all over the world, this is a safe

place for one of the largest collections of owls in the South West.

From lemurs to meerkats, alpacas to raccoons – as well as emus, wallabies, ravens and storks – your visit supports the recovery and care of Screech's many residents. A wonderful family day out!

Children can roam free in the outdoor playground. Enjoy a home-cooked meal from the tearoom or relax with an outdoor family picnic.



📍 Goss Moor, St. Columb, TR9 6HP

📞 01726 860182 🌐 screechowlsanctuary.co.uk



For opening times, tickets and to find out more, scan or visit: bdoc.uk/sos



National Trust Cotehele

An atmospheric Tudor house with medieval roots, a mill on an historic quay, a glorious garden with valley views and an expansive estate to explore.

Cotehele was the ancestral home to the Edgcumbe family for centuries. The Tudor house, perched high above the River Tamar, is decorated with tapestries, arms and armour, pewter, brass and old oak furniture. The interior tour has changed little over the years, although the furnishings were titivated

as Cotehele continued to inspire its adoring owners.

Outside, explore the formally planted terraces, or lose yourself in the Valley Garden, which includes a medieval stewpond and dovecote and leads down to the river. Seek tranquillity in the Upper Garden or visit the two orchards planted with local apples and cherries.



📍 St Dominick, near Saltash, PL12 6TA

📞 01579 351346 🌐 nationaltrust.org.uk/cotehele



For opening times,
tickets and to find out
more, scan or visit:
bdoc.uk/ntc



National Trust Glendurgan Garden

Stroll down through the peaceful, exotic and playful valley to a sheltered beach at the bottom. There are three valleys of Glendurgan to lose yourself in – full of fun, informality, natural beauty and amazing plants.

Wandering through the garden leads down to the unspoilt hamlet of Durgan on the Helford River: a place to watch birds and boats, skim stones and build sand-castles.

Walking back up from Durgan you can find a boat-seat, a gigantic tulip-tree and ponds teeming with wildlife. You can also learn about the Fox family who created this ‘small peace of heaven on earth.’

The maze has been foxing people for over 180 years. Who will be first to reach the middle of this living puzzle?



📍 Mawnan Smith, near Falmouth, TR11 5JZ
📞 01326 252020 🌐 nationaltrust.org.uk/glendurgan



For opening times, tickets and to find out more, scan or visit: bdoc.uk/gg



National Trust Lanhydrock

Dating from the 17th century but largely re-built after a devastating fire in 1881, Lanhydrock gives an extraordinary glimpse into the life of a Victorian country house. The Jacobean house was refurbished in high-Victorian style, with the best in country house design and planning and the latest mod-cons.

Discover two sides of Victorian life: from the kitchen which offers a thrilling glimpse into life 'below stairs, to the

luxurious family areas, elegant dining room and spacious bedrooms which reveal the comforts of 'upstairs' living.

This quintessential country house and estate is encircled by a beautiful garden that includes herbaceous borders and the fabulous parterre. Explore 900 acres of woods and parkland with off-road cycle trails to enjoy.



📍 Lanhydrock, Bodmin, PL30 4AB

📞 01208 265950 🌐 nationaltrust.org.uk/lanhydrock



For opening times, tickets and to find out more, scan or visit: **bdoc.uk/ntlh**



Pinetum Gardens

One of the largest modern gardens in Cornwall, Pinetum has been lovingly created over four decades and is home to one of the largest plant collections in the county.

Areas of intimate tranquillity contrast with open parkland vistas, all jewelled with rare and champion trees. Ten individually themed gardens and atmospheres await your discovery. Play hide and seek in the majestic Pinetum pines, enjoy peace in the Japanese Garden and be inspired out of season in Cornwall's only Winter Garden.

In 2019, a unique earth energy point was verified within Pinetum's Arboretum. This earth energy point, like others across the earth, radiates a positive healing energy that can benefit all who visit.

Open daily and conveniently located on the edge of St Austell, these beautiful gardens provide the perfect sanctuary in Nature.



📍 Holmbush, St Austell, PL25 3RQ
📞 01726 73500 🌐 pinetumgardens.com



For opening times, tickets and to find out more, scan or visit: bdoc.uk/pg



St Michael's Mount

The island world of St Michael's Mount is one of the jewels in Cornwall's crown. When the island is open, hop on a boat – or walk across the causeway during low tide – to a community where modern life meets over a thousand years of history.

Home to the St Aubyn family as well as a small community, this iconic island is crowned by a medieval church and castle – with the oldest buildings dating to the 12th century.

Immerse yourself in history, wonder at the architecture and discover the

legend of Jack the Giant Killer. Explore the sub-tropical terraced garden and enjoy breathtaking views of Mount's Bay.

Access changes throughout the year. Always check the website for the most up to date information before visiting and book ahead.



📍 Marazion, TR17 OHS

☎ 01736 887822 🌐 stmichaelsmount.co.uk



For opening times, tickets and to find out more, scan or visit:
bdoc.uk/smm



Trebah Garden

Experience the magical essence of Trebah, a sub-tropical paradise with a coastal backdrop, steeped in heritage, creativity and the spirit of innovation.

Four miles of footpaths wind through dazzling exotic planting, transporting you from one little corner of Cornwall to sunnier exotic climes. Trebah has its very own private beach, and countless secret corners waiting to be discovered, the perfect escape for all ages.

With a unique outdoor theatre and plenty of dedicated space for small

ones, as well as four-legged friends, Trebah is the perfect destination for both family adventures and peaceful solitude, with visitors enjoying inspiring spaces and unique events all year round.

Open daily from 9.30am April – October. Please see website for winter opening times.



📍 Mawnan Smith, Near Falmouth, TR11 5JZ
📞 01326 252200 🌐 trebah-garden.co.uk



For opening times, tickets and to find out more, scan or visit: bdoc.uk/tg



National Trust Trelissick

A welcoming estate with stunning maritime views and lovely woodland walks, Trelissick is set on its own peninsula, with panoramic views over the Fal estuary. You can explore the meandering paths through the garden, leading to exotic plants and herbaceous borders bursting with colour.

For those bringing four-legged friends, Trelissick offers woodland walks through dappled sunlight and across open parkland.

During peak periods enjoy a tea or coffee in the ground floor of the eighteenth century Trelissick house where the south-facing rooms overlook the Carrick Roads.

Crofters café offers a delicious menu, using seasonal and local produce. There's a National Trust gift shop and second-hand bookshop.

Trelissick is also home to an art gallery run by Cornwall Crafts Association.



📍 Feock, near Truro, TR3 6QL

☎ 01872 862090 🌐 nationaltrust.org.uk/trelissick



For opening times, tickets and to find out more, scan or visit:
bdoc.uk/ntthg



National Trust Trenzwainton Garden

Discover this sheltered National Trust garden nestled between the moors and the sea and nurturing an award-winning plant collection. Winding wooded paths climb to an open, grassy terrace with sea views across Mount's Bay.

Follow in the footsteps of the 1920s plant hunters to see plants that flowered in Britain for the first time. Award-winning magnolias and rhododendrons are still nurtured by those with a passion for their beauty.

A gentle stream runs through the centre and the carriage drive is bordered by colourful streamside planting and meadows.

Ten sections of walled gardens each have their own unique character, including the kitchen garden built in 1815 to the dimensions of Noah's Ark.

There's a café, gift shop, plant centre and second-hand bookshop.



📍 Madron, Penzance, TR20 8RZ
📞 01736 363148 🌐 nationaltrust.org.uk/trenzwainton



For opening times, tickets and to find out more, scan or visit: bdoc.uk/nttg



National Trust Trerice

A small Elizabethan manor house with fine interiors and delightful garden, Trerice is an architectural gem hidden away from the world in a web of narrow lanes and still somehow caught in the spirit of its age.

Trerice remains little changed by the advances in building fashions over the centuries, thanks to long periods under absentee owners. With golden stone, ornate Dutch-style gables and

a magnificent hall window Trerice is a grand Elizabethan house on a small scale.

From the highest point of the garden views stretch out over a landscape rich in history. Shouts of excitement ring out from the kayling lawn as the Cornish game of kayles is played. Trerice also features a shop, café and second-hand bookshop.



📍 Kestle Mill, Newquay, TR8 4PG

☎ 01637 875404 🌐 nationaltrust.org.uk/trerice



For opening times, tickets and to find out more, scan or visit: bdoc.uk/ntth



Image: Calvino Nights © Steve Tanner

The Minack Theatre

A place like no other, the world-famous Minack Theatre is a must-see for visitors to Cornwall.

Perched on rugged cliffs overlooking the spectacular panorama of Porthcurno Bay, you might think ancient Greeks had carved it from the granite. In fact, less than a century ago it was a rough gully of gorse and heather dropping dizzily down to the sea.

Today, you can discover the extraordinary story of Rowena

Cade, the woman behind its creation and experience the magic of live performance in this iconic space.

The Minack stages an annual programme of theatre and music from March to October. When there is no performance, visitors are welcome to explore the dramatic site and enjoy the glorious sub-tropical gardens.

The Minack is very popular and advance booking is essential for performances and visits.



📍 Porthcurno, TR19 6JU

☎ 01736 810181 🌐 minack.com



For opening times, tickets and to find out more, scan or visit: bdoc.uk/tmt



National Maritime Museum Cornwall

Learn about the unbreakable ties between the people of Cornwall and the briny blue. This independent Falmouth museum reveals fascinating tales of life on the ocean, from plucky Packet Service crews to modern-day explorers.

Celebrate the overwhelming influence of the sea on history and culture, exploring 15 galleries over five floors. Dive into the museum's brand-new major exhibition, *Pirates*, opening on 31 March.

Head to the Skull Island Play Zone and the RNLI Rescue Zone where imaginations can run wild. Look up at the flying flotilla in the Main Hall and drink in the views from the Waterside Café.

NMMC offer family activities every school holiday and a changing programme of events and exhibitions throughout the year.



📍 Discovery Quay, Falmouth, TR11 3QY

☎ 01326 313388 🌐 nmmc.co.uk



For opening times, tickets and to find out more, scan or visit: bdoc.uk/nmmc



English Heritage Pendennis Castle

Stir up your sense of adventure this coastal fortress with unmissable sea views. Travel back to wartime Cornwall, climb to the top of the keep, and enjoy acres of green space.

Situated on a headland overlooking Falmouth, Pendennis is one of Henry VIII's finest seaside castles and has a rich and poignant history. The castle has defended Cornwall since Tudor times and played a vital role during the two World Wars. Winding stone

staircases, atmospheric war rooms and action-packed events make it easy to imagine life here centuries ago.

Don't miss the blast of a historic gun (April – October), or the new castle themed soft play next to the café, where you can enjoy traditional Cornish food while little ones play.

Book online and save 10%, search 'Pendennis Castle'.



📍 Castle Drive, Falmouth, TR11 4NQ
📞 01326 316594 🌐 english-heritage.org.uk/pendennis



For opening times, tickets and to find out more, scan or visit: bdoc.uk/pc



PK Porthcurno

From Morse code to mobiles, discover the amazing story of our interconnected world at the Museum of Global Communications.

Get hands-on with technology and enjoy activities and trails that bring the story of communication to life. Expert talks explain the science and history of global communications, demonstrating the equipment used along the way.

Go underground and explore the top-secret bunker that hid the Porthcurno Telegraph Station in World War II, where

Allied communications were heavily protected by flamethrowers and bomb-proof doors.

Visit the famous Porthcurno Beach where undersea telegraph cables from all corners of the world came ashore at the unique Cable Hut.

With a collection and story that began 150 years ago, a visit to PK Porthcurno will reveal how our tranquil valley in Cornwall became host to the past, present, and future of worldwide communications.



📍 Eastern House, Porthcurno, TR19 6JX 📞 01736 810966

🌐 pkporthcurno.com * Seasonal restrictions



For opening times, tickets and to find out more, scan or visit: bdoc.uk/pkp



Tate St Ives

Discover an award-winning museum of modern and contemporary art on the edge of the Atlantic Ocean.

Tate St Ives is an iconic gallery showcasing some of the best-loved British artworks of the twentieth century, alongside an ever-changing programme of exhibitions embracing the best of modern and contemporary art. As you wander through Tate St Ives a series of stunning viewpoints frame the magical St Ives light, seascapes and landscapes, capturing the very substance that first drew artists to settle here.

The Barbara Hepworth Museum and Sculpture Garden is a 10-minute walk away where you can discover the magical home, workshops, and unique garden of one of the greatest sculptors of the twentieth century.

The rooftop café has spectacular coastal views across St Ives Bay and our shop offers a unique range of gifts inspired by local landscapes and artists, and a fantastic range of art books.



📍 Porthmeor Beach, St Ives, TR26 1TG
📞 01736 796226 🌐 tate.org.uk/stives



For opening times, tickets and to find out more, scan or visit: bdoc.uk/tsi



English Heritage Tintagel Castle

Go on a legendary day out at Tintagel Castle, a clifftop fortress where history and legend intertwine. Cross the new bridge to the 'island' and explore the medieval Great Hall, high above the waves.

It's easy to imagine why this atmospheric landscape inspired tales of King Arthur. Journey back 1500 years and Tintagel was a bustling stronghold – residence of the rulers of Cornwall. Wander among the ruins

and meet Gallos, the brooding life-size statue of an ancient king.

Tucked below the castle is a secluded beach, perfect for a picnic or a paddle on the shore. Venture into Merlin's Cave when the tides allow, then look out for seals playing in the water. Hungry explorers can take a break in the Beach Café and enjoy locally-sourced food and drink.

Book online and save 10%, search 'Tintagel Castle'.



📍 Castle Road, Tintagel, PL34 0HE

☎ 01840 770328 🌐 english-heritage.org.uk/tintagel



For opening times, tickets and to find out more, scan or visit: bdoc.uk/tc



Wheal Martyn Clay Works

Dig deep and discover the special ingredient in our everyday lives that still shapes Cornwall and our world today – china clay! It hides in your toothpaste, mugs, paper, tyres and even your cosmetics.

A unique indoor and outdoor museum, Wheal Martyn tells the story of Cornwall's 'secret' billion pound industry, and the people who brought it to you, from the heart of Clay Country.

Immerse yourself in the historic grounds of the Victorian clay works,

bursting at the seams with tools, machinery, waterwheels, artefacts and stories. Explore woodland and nature trails, let off steam in the play area and discover spectacular views of modern clay mining overlooking the working pit.

An inspiring day out packed with culture, nature and family-friendly fun.



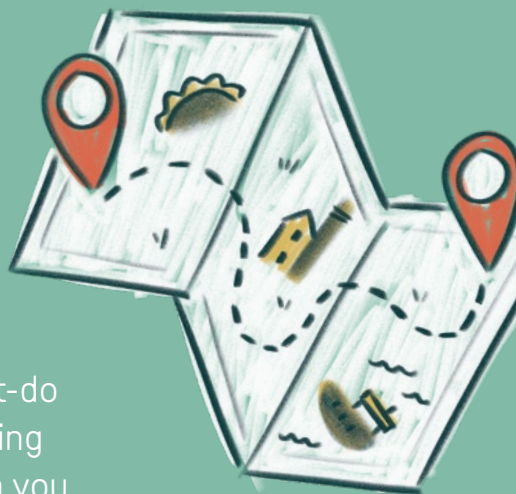
📍 Carthew, St Austell, PL26 8XG
📞 01726 850362 🌐 wheal-martyn.com



For opening times, tickets and to find out more, scan or visit: bdoc.uk/wmcw

Kids' Eye-Spy

Here's a list of absolutely must-do activities for when you're visiting Cornwall. How many things can you tick off the list?



☐ I've watched the sun set over the sea

☐ I've eaten a traditional Cornish pasty, yum yum!



☐ I've been rockpooling

☐ I've been crabbing on the quay at a fishing village

☐ I've been on a boat trip

☐ I've eaten a cream tea – remember in Cornwall, it's jam first then cream!



☐ I've built a giant sandcastle on the beach



☐ I've seen lots of old mine chimneys dotted all around the countryside

Keep a tally of them here:

☐ I've ridden my bike along the Camel Trail



☐ I've been out on the water in a kayak

Visit Cornwall



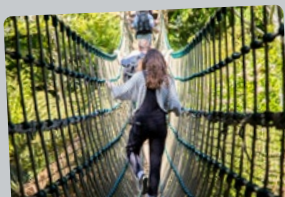
Memories are
made in Cornwall.

📷 Lovecornwalluk

f ilovecornwall

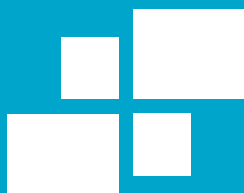
→ [visitcornwall.com](https://www.visitcornwall.com)

📍 The Lost Gardens of Heligan



📍 St Michael's Mount





Cornwall Association of Tourist Attractions



bestdaysoutcornwall.co.uk



[BestDaysOutCornwall](https://www.facebook.com/BestDaysOutCornwall)



[GuideToCornwall](https://twitter.com/GuideToCornwall)



[bestdaysoutcornwall](https://www.instagram.com/bestdaysoutcornwall)

The Forest Stewardship Council® is an international nongovernmental organization that promotes environmentally appropriate, socially beneficial and economically viable management of the world's forests. To learn more, visit www.fsc.org



This product is made of FSC®-certified and other controlled material.